

Contrabasso

Jan Kehrberger  
Kammersinfonie

1. Choral

$\text{♩} = 96$

1. 2.

*ffz* *sfz* *sfz*

6

2

*f*

11

Musical score for the first system of '1. Choral'. It consists of three staves of music in bass clef. The first staff starts with a tempo marking of quarter note = 96. It features a first ending bracket and a second ending bracket. Dynamics include *ffz*, *sfz*, and *f*. A measure rest of 2 is indicated above the second staff. The piece ends at measure 11.

2. Battaglia

$\text{♩} = 120$

2 4

*ff* *p*

11

Cor. Sva

16

23

4

30


*mp*

33


36

Musical score for the second system of '2. Battaglia'. It consists of seven staves of music in bass clef. The first staff starts with a tempo marking of quarter note = 120. It features measure rests of 2 and 4. Dynamics include *ff* and *p*. A 'Cor. Sva' part is indicated above the second staff. The piece continues through measures 11, 16, 23, 30, 33, and 36, ending with a final measure rest of 4.

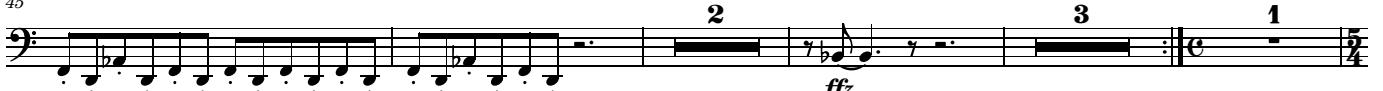
39




42 *trepitoso*




45




54



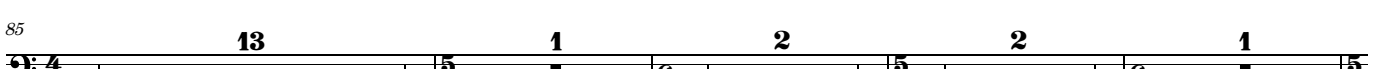
66




75



85



104



### 3. Weltende

$\text{♩} = 72$



6



10



16

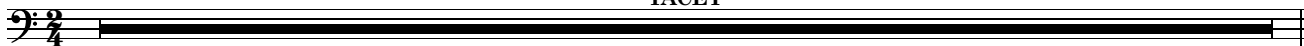


Contrabasso

4. Choral

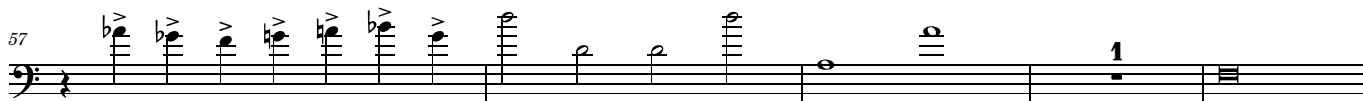
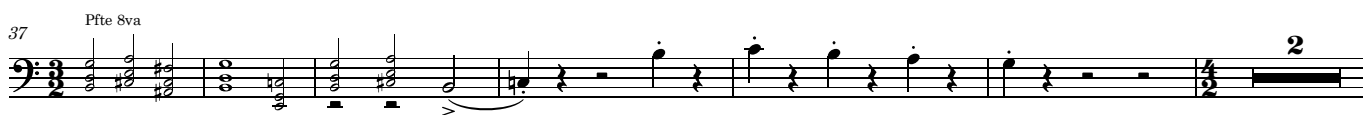
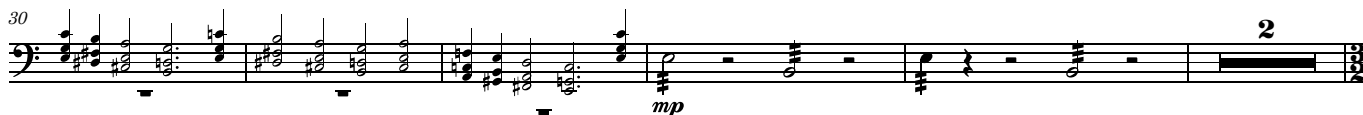
♩ = 72

TACET



5. Motetus

♩ = 72



72

*pp* **1** *tacet al fine*

## 6. Noch..-

♩ = 92

## 7. Heimkehr

♩ = 56

*p*

11 *Molto riten.* *a tempo* *Riten.* *a tempo*

20

31 *Più mosso* *accel.* **1**

36 *a tempo* **1** *rall.* **1** *pp* *pizz.* **3**

## 8. Intermezzo ("noch"..-)

♩ = 72

*p* **1** *pizz.* **3**

Contrabasso

# 9. Allegro feroce / "noch"

$\text{♩} = 120$

**2**

*pp*

10

15

*p*

20

25

*mp cresc. poco a poco*

30

35

*sfz f*

40

*ff*

*trepitoso*

45

50

**10**

*Vi I Sva*

64

69

74

$\text{♩} = \text{♩}$

**25**

*Pfte Sva*

*p*

105 *f* *mp*

110 *7* *Pfte 8va* *9* *accel.....*

120 **Tempo I**

125

130 *2*

137 *pp*

145

150 *p*

155

160 *mp cresc. poco a poco*

165

170 *sfz f*

175 *ff* *trepitoso*

180  $\text{♩} = \text{♩}$

196  $\text{♩} = \text{♩}$

Org. 8va

217

### 10. Noch..-

$\text{♩} = 72$   $\text{♩} = 144$

### 11. Herbst

$\text{♩} = 60$   $\text{♩} = 36$  Tempo I

Tempo I  $\text{♩} = 24$  Tempo I  $\text{♩} = 36$

### 12. verbrennen

$\text{♩} = 160$

28 **10**

44

52 **2**

60 **3** **9** *8va*

77 **(8)** **5**

88

### 13. Choral

♩ = 112

*Cl. 8va*

[1] **10**

12 *Ob. 8va* **Choral** **8**

24 **13** **18** ♩ = 80

59 *Fl. 8va*

64 6

76 6

Vla 8va

80 51

135 6

Vi II 8va

Oh 8va

140

144 3

Pfte 8va

151

155 4

*più f*

163 2

*molto cresc.* *ff*

169

175 11

sost. .... Tempo I molto rall. ....

tacet al fine